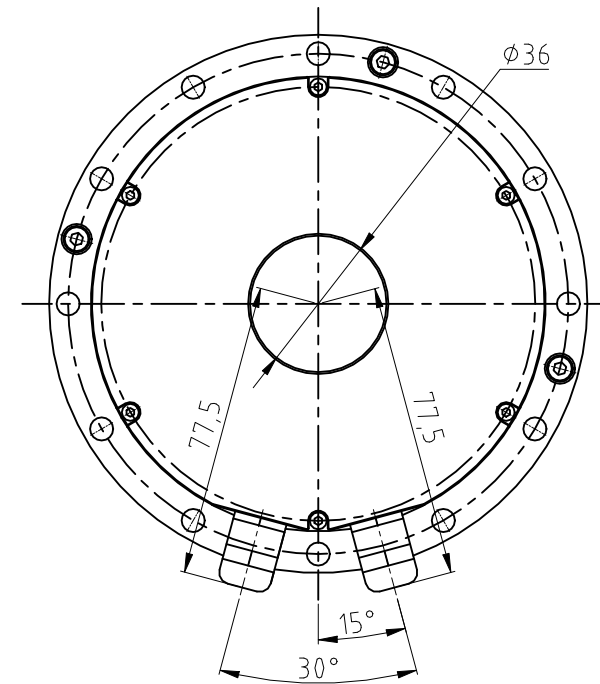
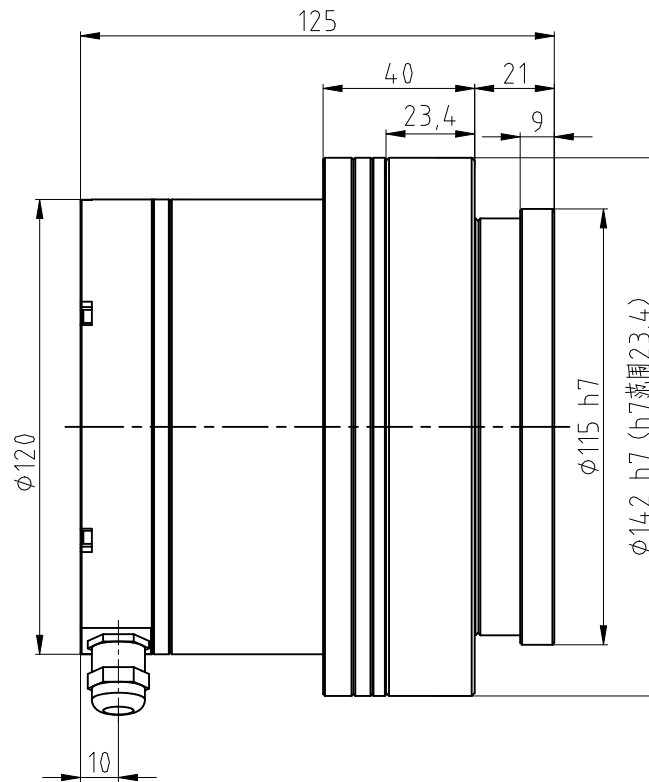
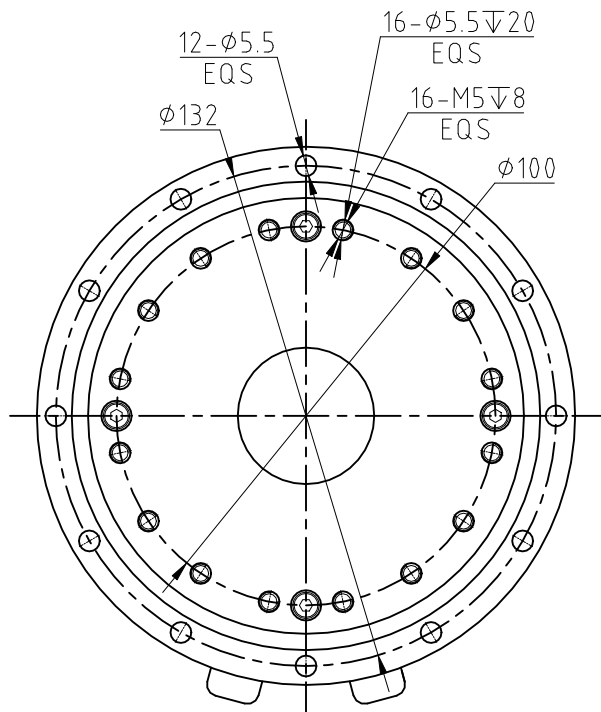


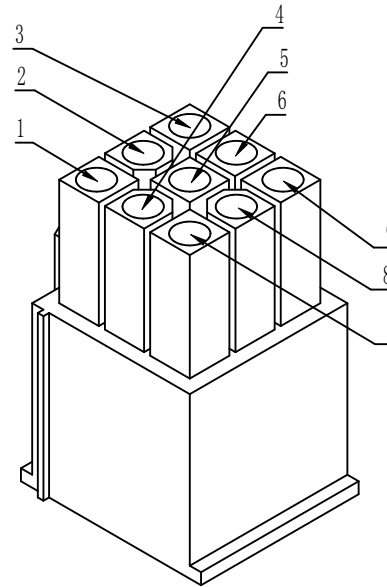
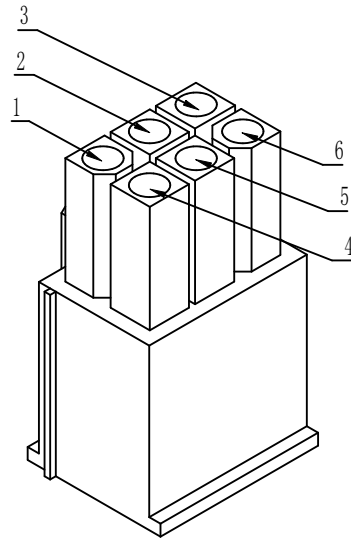
Sign



				Joint Module			M142-B-XXX-BS-C00	
							GJ-DW-ME-0083	
标记	处数	更改内容	签字	日期	客户图样标记	重量(kg)	比例	Laitual Drive 浙江来福谐波传动股份有限公司
设计							1:1	
审核								
批准								
工艺会签								
		版本号	A5		共 2 页	第 1 页		

Motor Parameter	
Voltage	AC220V
Rated Power	1000W
Rated Speed	3000rpm
Max Speed	5000rpm
Motor Phase Resistance	0.46 Ohms
Motor Phase Inductance	2.5mH
Back EMF	42.1Vrms/krpm
Number of Pole Pairs	8

Sign



Power Connector:

Module-side connector housing: HX41405-6P
 Module-side connector terminals: HX41406-6R / RT
 Customer-side connector housing: HX41406-6R
 Customer-side connector terminals: HX41406-6P / PT

Technical Requirements:

- The module power cable and signal cable shall have a lead length of 300 mm each.
- Insulation resistance (DC 500V) \geq 500 M Ω ; dielectric withstand voltage: AC 1500V for 1 minute.
- Encoder type: Absolute encoder; Encoder protocol: BiSS-C; Encoder resolution: 16-bit multi-turn, 17-bit single-turn.
- The appearance shall be free from visible defects such as burrs, scratches, dents, or damage.
- Standard version:
Storage temperature: -20°C to 80°C Operating temperature: -10°C to 55°C
- Special version:
Storage temperature: -40°C to 80°C Operating temperature: -30°C to 55°C
- Protection class: IP66.
- Positioning accuracy (unidirectional): 60 arcsec; Repeatability: 20 arcsec.

Encoder Connector:

Module-side connector housing: HX41405-9P
 Module-side connector terminals: HX41406-9R / RT
 Customer-side connector housing: HX41406-9R
 Customer-side connector terminals: HX41406-9P / PT

Housing 1: Power Connector		
Pin No.	Signal Name	Note
1	U	
2	V	
3	W	
4	GND	
5	Brake+	
6	Brake-	

Housing 2: Encoder Connector		
Pin No.	Signal Name	Note
1	SL1+	Communication+
2	GND	Ground
3	Vcc	Power
4	MA1+	Clock+
5	MA1-	Clock-
6	SL1-	Communication-
7	PG	Shielding
8	Battery-	
9	Battery +	

Joint Module Parameter

Ratio	Per. Max Value for Ave. Load torque (Nm)	Permissible peak torque at start/stop (Nm)	Instantaneous Permissible max torque(Nm)	Rated Speed (rpm)	Max Speed (rpm)	Rated Current (A)	Max Current (A)	Tq Constant (Nm/Arms)	Inertia Moment (kg·mm ²)	Weight (kg)	Approval				Joint Module			M142-B-XXX-BS-C00	
											标记	处数	更改内容	签字	日期	客户图样标记	重量(kg)		比例
51	140	281	497	58.8	94.1	5.45	10.94	25.69	702	5.64	设计				共 2 页	第 2 页	1:1	GJ-DW-ME-0083	
81	217	395	738	37	59.3	5.32	9.68	40.80		With brake	审核								
101	281	433	841	29.7	47.5	5.52	8.51	50.87		Without	批准								
121	281	459	892	24.8	39.7	4.61	7.53	60.95		brake	工艺会签								
											版本号		A5					浙江来福谐波传动股份有限公司	